

# 6 SIGNS OF MELANOMA

If you see one or more, you need to take action!

## What do you see?

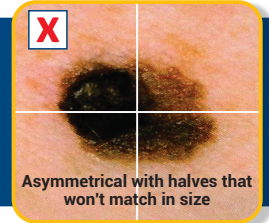
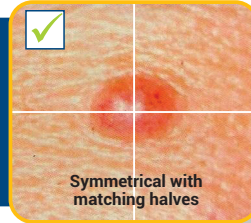
✓ BENIGN

✗ SUSPICIOUS

# A

### ASYMMETRY

Do the two halves of the lesion match if you draw a line through the middle?



# B

### BORDER

Are the borders smooth and even or do they have notched and uneven edges?



# C

### COLOUR

Does the lesion have one colour or a variety of colours, including shades of black, brown, tan, blue, red or white?



# D

### DIAMETER

Is the lesion smaller or larger than a pencil eraser which is approximately 6mm?



# E

### EVOLVING

Are there any changes in size, shape, colour, elevation or any other new trait or symptom such as bleeding, itching or crusting?



# F

### 'FUNNY' LOOKING

Does the lesion look new, strange, unusual, or different from the others?



Source: [www.skincancer.org](http://www.skincancer.org)



SKIN CANCER  
INSTITUTE

[www.skincancerinstitute.com](http://www.skincancerinstitute.com)